

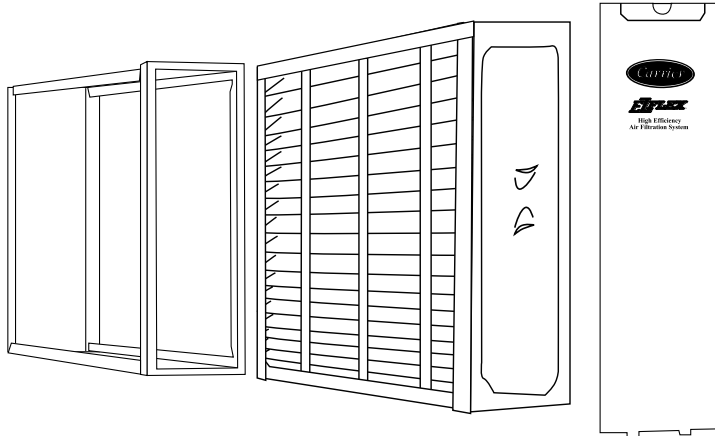


Product Data

EZXCAB EZ Flex™ Expandable Air Filter with Cabinet

Sizes 0016, 0020

EZ FLEX™



The EZ Flex™ Expandable Air Filter sets the precedent in the air filtration industry! Coupling easy, time saving assembly and flexible design, the EZ Flex™ filter is the answer for any contractor who wants to save both time and money.

FEATURES/BENEFITS

FLEXIBLE DESIGN — EZXCAB can be used in upflow, downflow and horizontal applications.

STURDY FLEXIBLE CABINET DESIGN — The EZXCAB features a sturdy 20ga. Powder coat painted cabinet that can withstand the weight of a 400 lb. Furnace. The EZXCAB can be easily upgraded to the EAC — Electronic Air Cleaner.

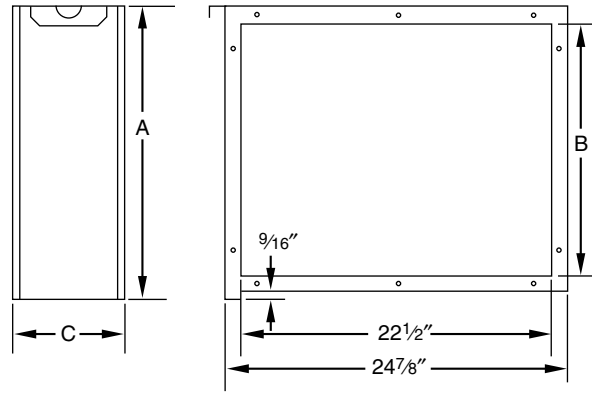
EFFICIENT DESIGN — The EZ Flex™ filter is rated at MERV 10. MERV (ASHRAE Standard 52.2, Minimum Efficiency Reporting Value) for residential filters will typically be in range of MERV 1-10. The higher value the more efficient the filter.

SYSTEM FRIENDLY PRESSURE DROP — The EZ Flex™ filter protects HVAC system by not producing significant pressure drop, therefore allowing the system to operate at its optimum efficiency.

LARGE DUST HOLDING CAPACITY — The EZ Flex™ has a high dust holding capacity. This increases the time between filter changes.

The exceptionally large surface area traps dust, pollen, molds, tobacco, smoke, grease, soot, bacteria, and animal dander to provide cleaner, fresher air that is free of airborne pollutants and irritants regardless of the season.

Dimensions

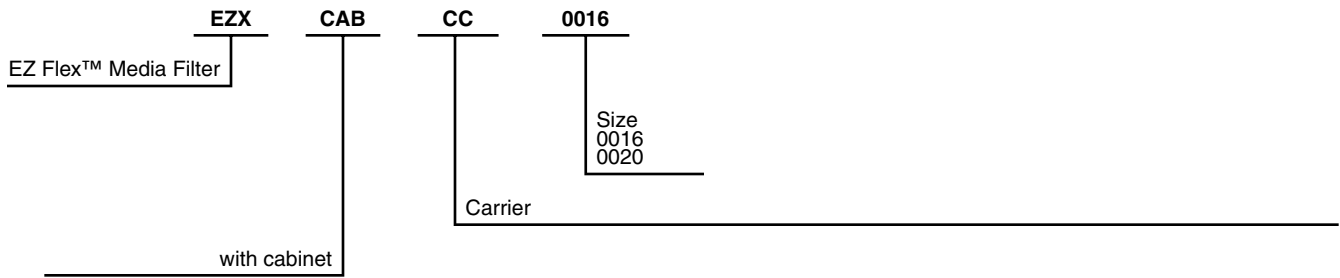


C02026

DIMENSIONS (In.)

MODEL	A	B	C
EZXCAB-0016	16-1/4"	14-1/4"	7-1/8"
EZXCAB-0020	20-1/4"	19-1/4"	7-1/8"

Model number nomenclature



Physical data

SIZE	016	020
RATED AIRFLOW	600–1600 CFM	600–2000 CFM
MERV	10	10
DUST HOLDING CAPACITY (grams)	95.5	151
ATMOSPHERIC DUST SPOT EFFICIENCY (initial)	30%	30%
TYPICAL STATIC PRESSURE DROP (in. wc.) (Clean @ rated airflow)	.25	.22
FILTER MEDIA	Synthetic	
FILTER AREA (sq ft)	23.14	28.58
SHIPPING WEIGHT (lbs)	18 lb	20 lb

PLEATED MEDIA FILTER	EFFICIENCY ¹	PRESSURE DROP ²	DUST HOLDING CAPACITY ³
16-in.	E1: 16.5%	0.21-in.	95.5g
	E2: 45.7%		
	E3: 75.9%		
20-in.	E1: 26.1%	0.20-in.	151.0g
	E2: 52.0%		
	E3: 82.3%		

Notes:

- Minimum Efficiency Reporting Value (MERV) is specified by ASHRAE Standard 52.2. It is based on lab tests to determine the filter's ability to trap particles. MERVs for residential filters will typically be in the range of MERV 1-10. The higher the value, the more efficient the filter. MERV 10 filters have a minimum of 85% particle collection efficiency in the .3-.10 micron particle size range. (Human hair is approximately 50-100 microns in diameter.) All three sizes of filters reach a MERV 10.
 - E1: MINIMUM Average Efficiency for particles sized between 0.3 and 1 micron.
 - E2: MINIMUM Average Efficiency for particles sized between 1 and 3 microns.
 - E3: MINIMUM Average Efficiency for particles sized between 3 and 10 microns.
 - Reaches 99% efficiency for particles sized between 7 and 10 microns at 0.40-in. pressure drop.
- Initial pressure drop (in. wc) at rated airflow (1400CFM for 0016, 1700CFM for 020).
- At 0.6-in. pressure drop and 492FPM per ASHRAE 52.2.

Replacement filters

REPLACEMENT FILTERS ORDER NUMBER	EXPXXFIL0016	EXPXXFIL0020
NUMBER OF FILTERS PER CARTON	10	10

Pressure drop

PRESSURE DROP AT VARIOUS AIRFLOWS (CLEAN)

SIZE	TYPICAL FACTORY SUPPLIED FURNACE/FAN COIL FILTER	016 Typical	020 Typical
Airflow (CFM)	Resistance (inches of water) (Clean filter)		
600	0.015	0.045	0.025
800	0.02	0.07	0.045
1000	0.03	0.11	0.075
1200	0.035	0.15	0.1
1400	0.045	0.21	0.13
1600	0.055	0.25	0.16
1800	0.062	—	0.2
2000	0.07	—	0.22
2200	—	—	—

NOTE: When applying the EZ Flex™, attention must be given to the duct and system design because all these components affect system static pressure. The EZ Flex™ has a higher static pressure drop than the typical factory supplied furnace and/or fan coil filter (as shown above), but is designed to ensure proper system efficiency and reliability when applied to a properly designed duct system and properly sized HVAC equipment.

